

E360 electricity meter User Manual



1. Meter display
2. Screen browse button
3. Switch button
4. Meter number
5. P1-port, client interface

Monitoring consumption from the meter

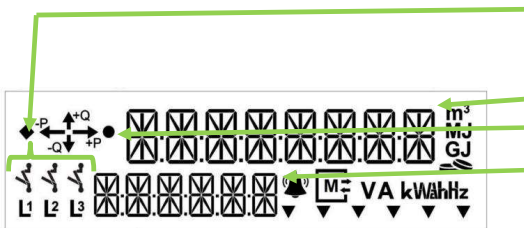
By default, the display shows the total energy consumption reading. By pressing the browse button on the meter, you can browse through the consumption of different tariffs. The reading identifier (explanations below in the instructions) shows you what energy reading is shown on screen.

Turning off electricity in the apartment/property

During electrical work, the electricity must *always* be turned off at the main switch or main fuses!

In other cases, the electricity can be turned off with the switch button on the meter. This way, the data transfer connection to the meter is maintained, but the electricity is cut off. Switching electricity back on is done with the same button.

Meter display details



1. Status – on/off
 - Electricity on - { { {
 - Electricity off - { { {
2. Energy reading
3. -P is energy produced and +P is energy consumed
4. Reading identifier
 - 1.8.0 – Total energy consumption
 - 1.8.1 – Day energy consumption
 - 1.8.2 – Night energy consumption
 - 1.8.3 – Winter weekday energy consumption
 - 1.8.4 – All other times energy consumption
 - 2.8.0 – Total energy production
 - 0.9.1 – Time
 - 0.9.2 – Date